



**PACP**  
PORTUGUESE AMERICAN CITIZENSHIP PROJECT

**A NON-PARTISAN INITIATIVE TO PROMOTE CITIZENSHIP AND CIVIC INVOLVEMENT**



**PORTUGUESE FRATERNIAL SOCIETY  
OF AMERICA  
MERCED COUNTY, CA**

**EVALUATION  
OF  
THE 2012 ELECTIONS**

**PREPARED  
APRIL 30, 2013**

Supported by Luso-American Foundation  
Government of the Autonomous Region of the Azores  
Business and Community Leaders in the Portuguese American Community

# REPORT CONTENTS

<b>Statistics and Summary of Work</b>	<b>2</b>
<b>Results</b>	<b>2</b>
<b>Results Graphs</b>	<b>3</b>
Voter Turnout Summary	3
Voter Turnout by Age	4
Voter Turnout – 2008 vs. 2012 Presidential Elections	5
<b>Appendices</b>	<b>6</b>
Registered Voters by Age and Party	7
Registered vs. Actual Voters by Age and Voting Method	8
Registered vs. Actual Voters	12
Voted in both 2008 and 2012 Presidential Elections	13
Voted in all last three elections	13

## Key Statistics – 2012

Voter turnout data received from Merced County, February 26, 2013.

### PFSA Merced (*Merced County in italics*)

- All Household Members registered to vote: 2,650 (*98,248*)
- Voter Turnout - June 2012: 46.1% (*25.3%*)
- Voter turnout – November 2012: 77.3% (*63.0%*)

## Summary of Work

The Portuguese Fraternal Society of America of Merced County is one of 8 counties to participate in the Portuguese American Citizenship Project in 2012.

Postcards reminding PFSA members to vote were sent out for the November election.

## Results

PFSA Merced voter turnout for the June and November 2012 elections was significantly higher than countywide turnout. The PFSA Merced turnout for the June Primary Election was 46.1%, which was significantly higher than the Merced County turnout of 25.3%. The PFSA Merced turnout for the November General Elections was 77.3%, which was also significantly higher than the Merced County turnout of 63.0%.

Voter turnout was higher for PFSA members in all age groups than the Merced countywide turnout for both the June and November elections. Older voters had a higher turnout in the June election than younger voters, while voters in the 50-70 age range had the highest turnout in the November election.

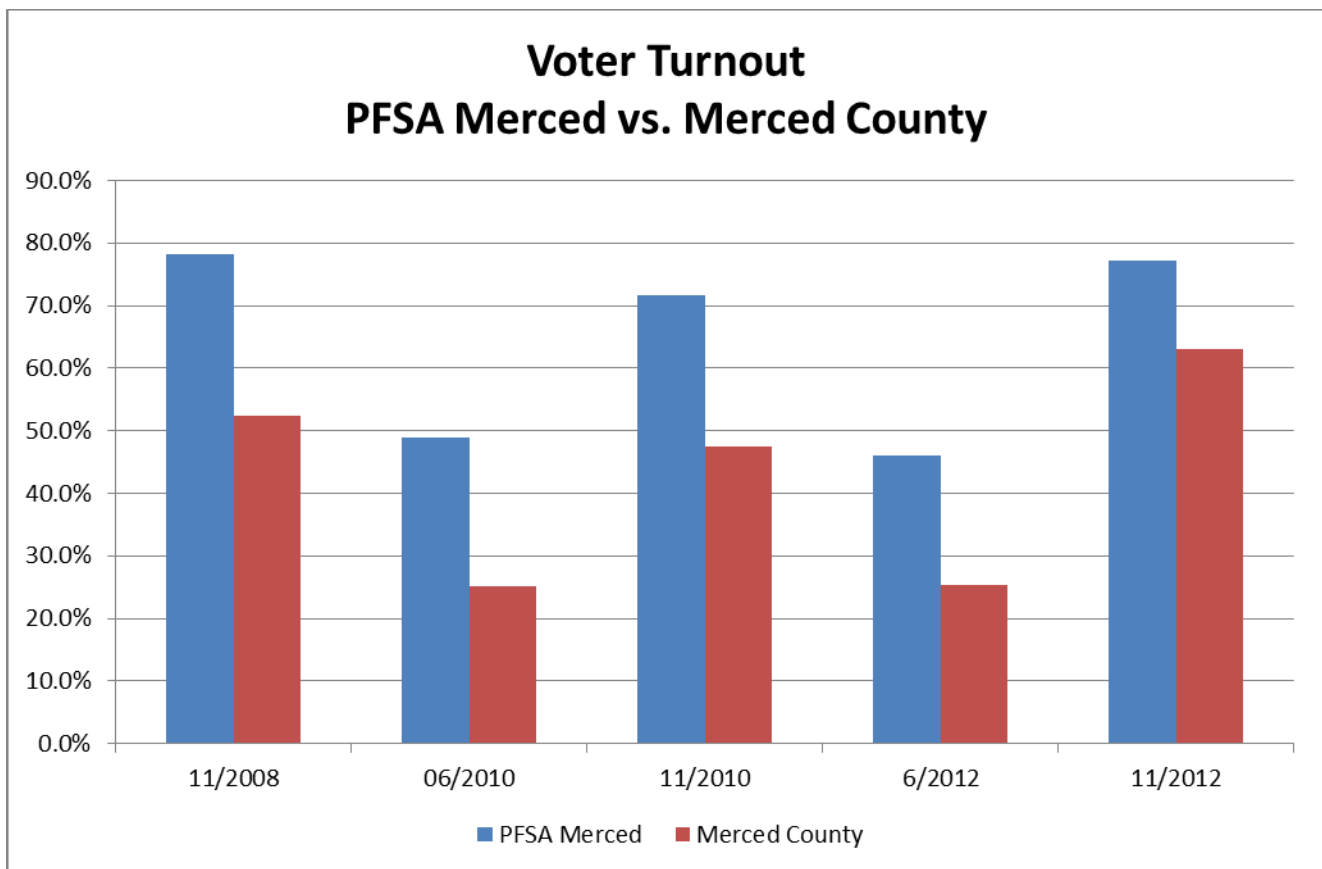
Merced county does not collect or maintain gender information for registered voters so statistics based on gender could not be generated.

More PFSA voters under age 60 are registered Republicans than other party affiliations while more voters older than age 60 are registered as Democrats. There are few PFSA Merced members that are registered as Independents or members of other political parties. Countywide, there are more registered Democrats in all age groups than other political

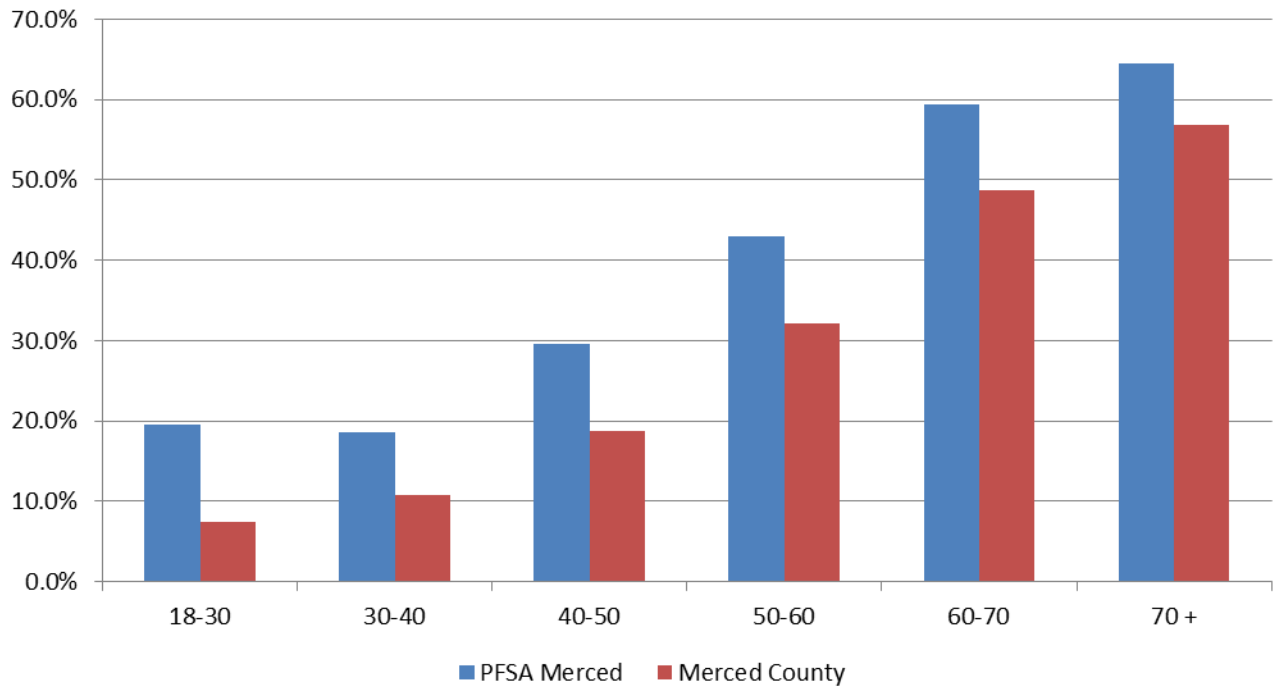
parties, as well as a significant number of Independents, particularly in voters under 30 years of age.

The following graphs summarize voter turnout by age, political party affiliation and voting method.

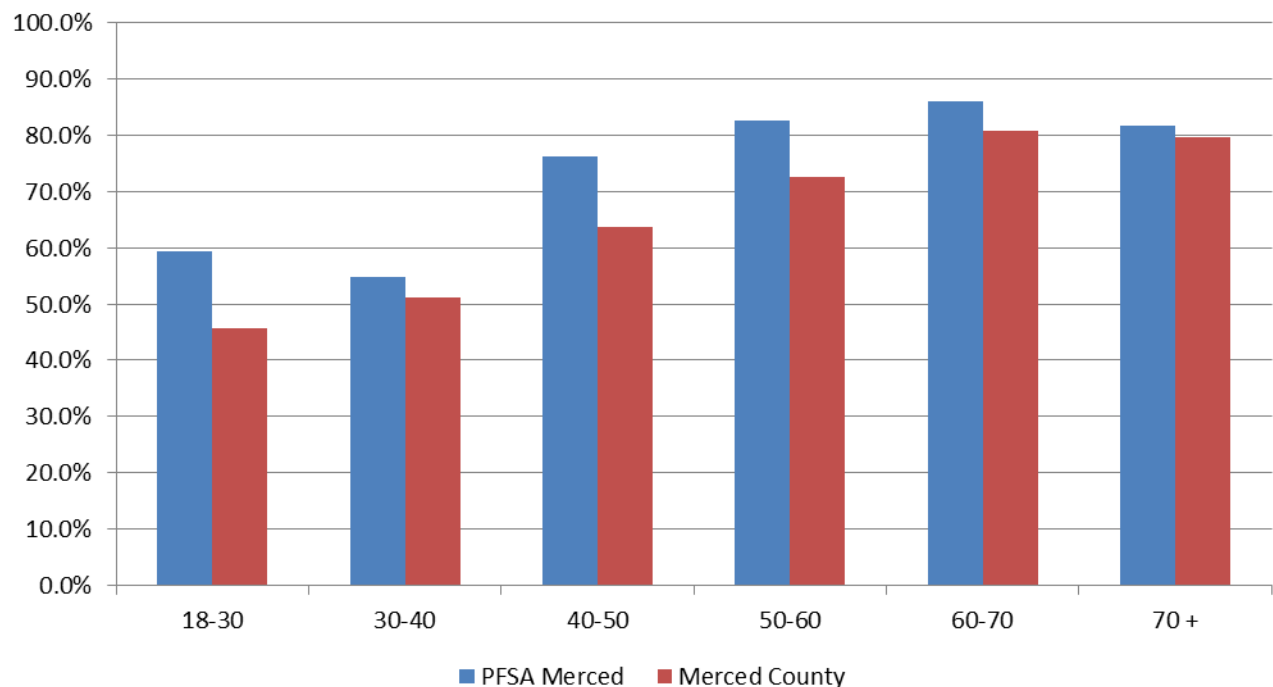
## Results Graphs



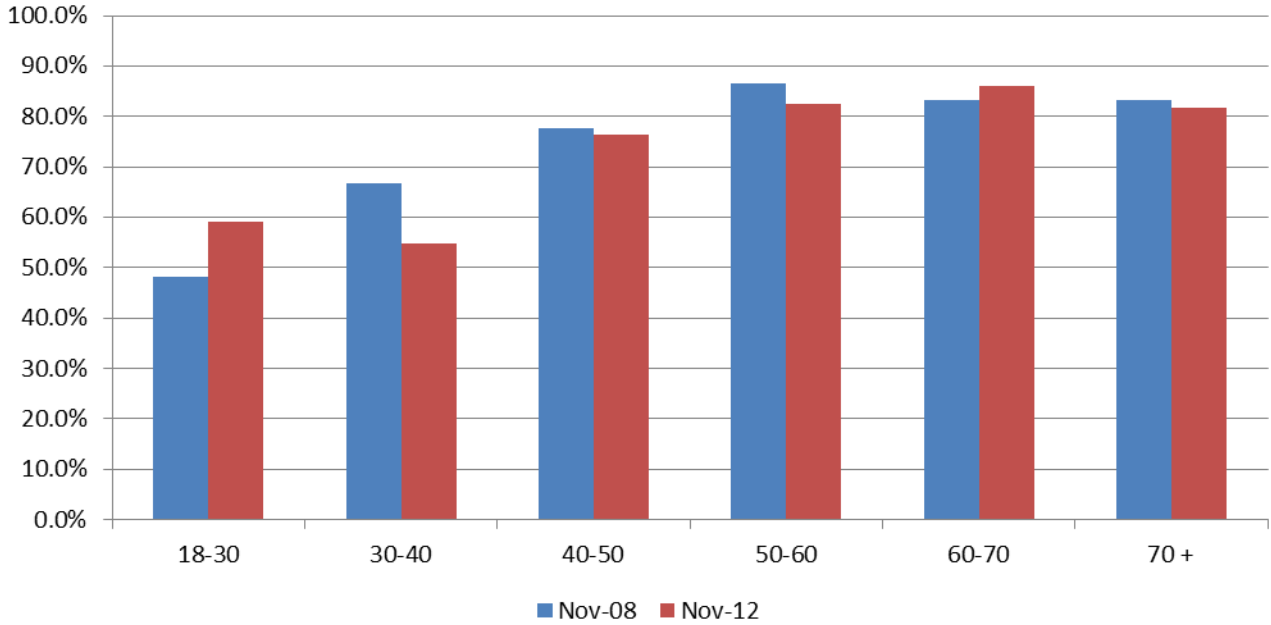
### Turnout By Age - June 2012 PFSA Merced vs. Merced County



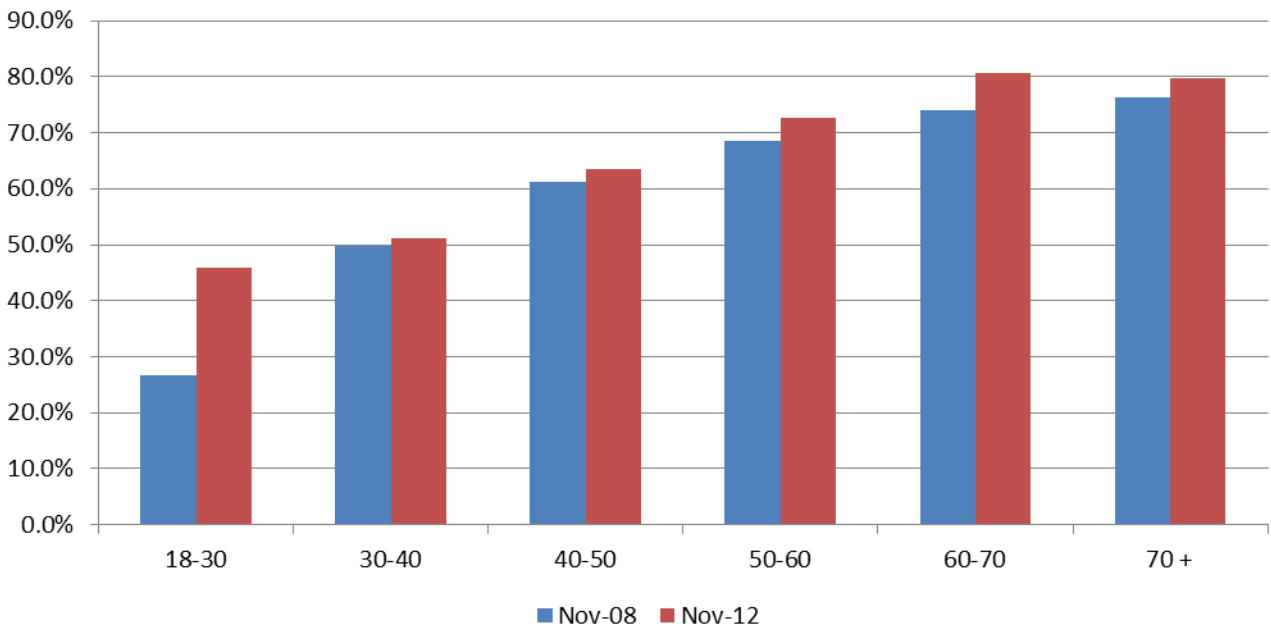
### Turnout By Age - November 2012 PFSA Merced vs. Merced County



### Voter Turnout 2008 vs. 2012 Presidential Elections PFSA Merced by Age



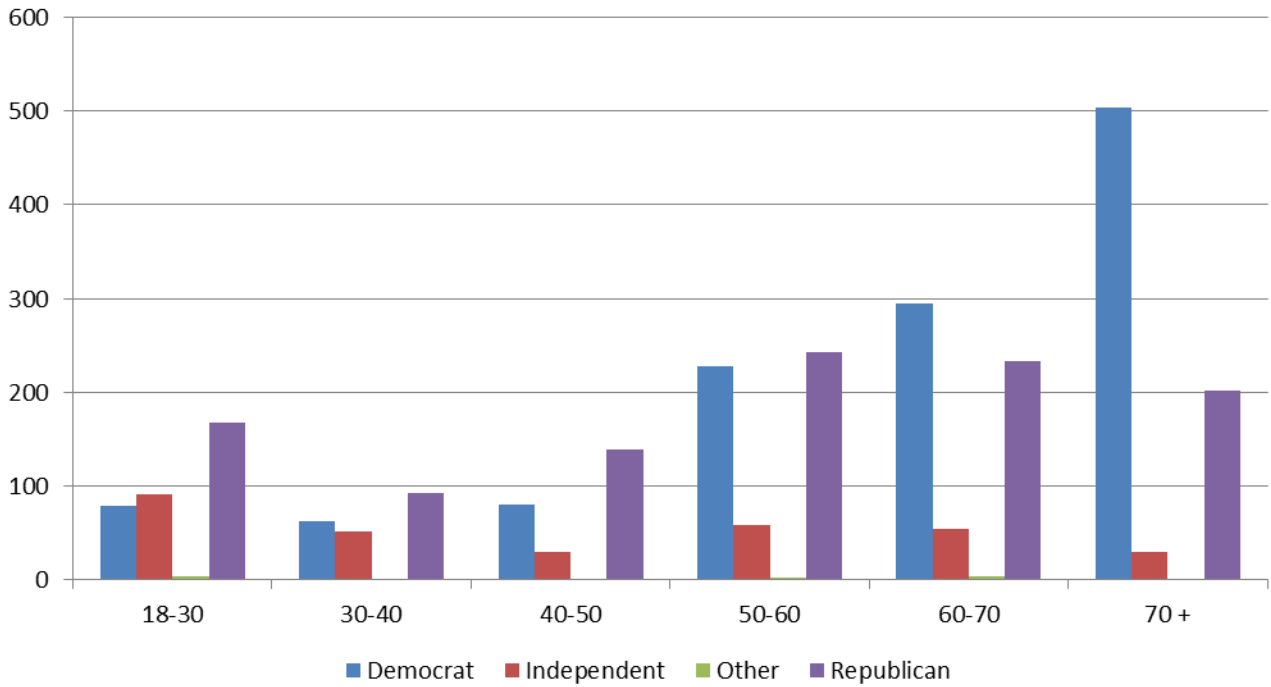
### Voter Turnout 2008 vs. 2012 Presidential Elections Merced County by Age



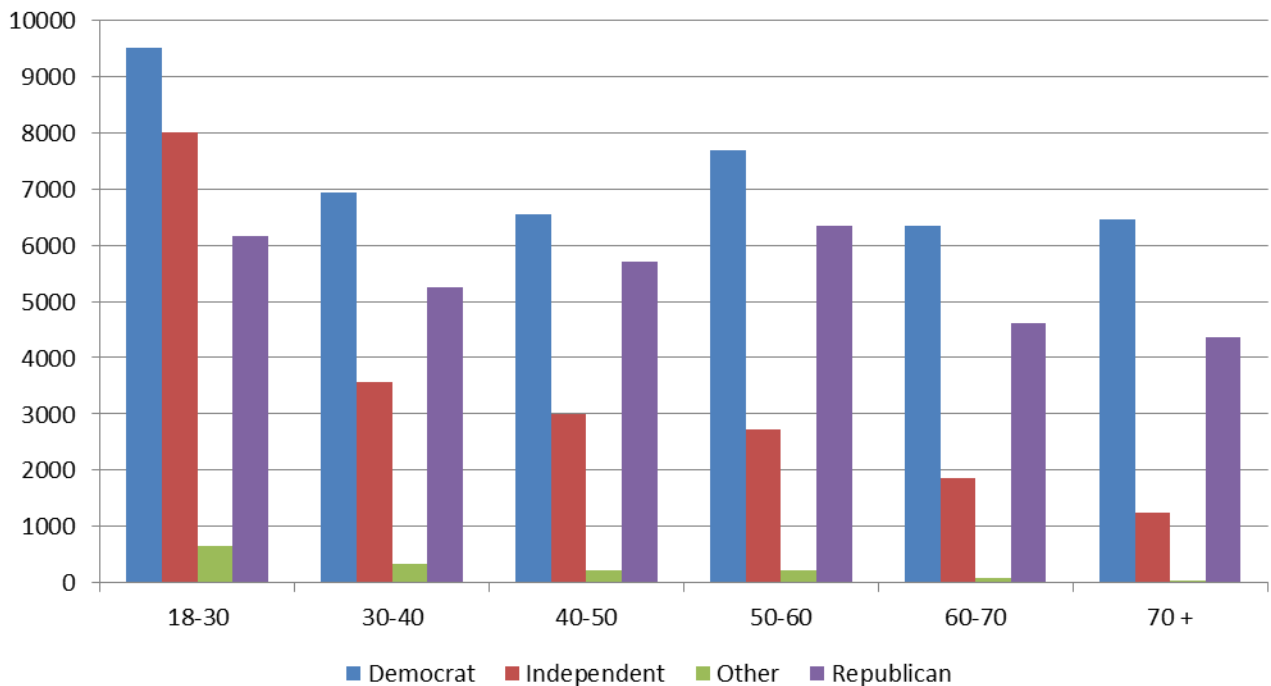
## **Appendices**

<b>Registered Voters by Age and Party</b>	<b>7</b>
<b>Registered vs. Actual Voters by Age and Voting Method</b>	<b>8</b>
<b>Registered vs. Actual Voters</b>	<b>12</b>
<b>Voted in both 2008 and 2012 Presidential Elections</b>	<b>13</b>
<b>Voted in all last three elections</b>	<b>13</b>

### Registered to Vote by Age and Party PFSA Merced - November 2012

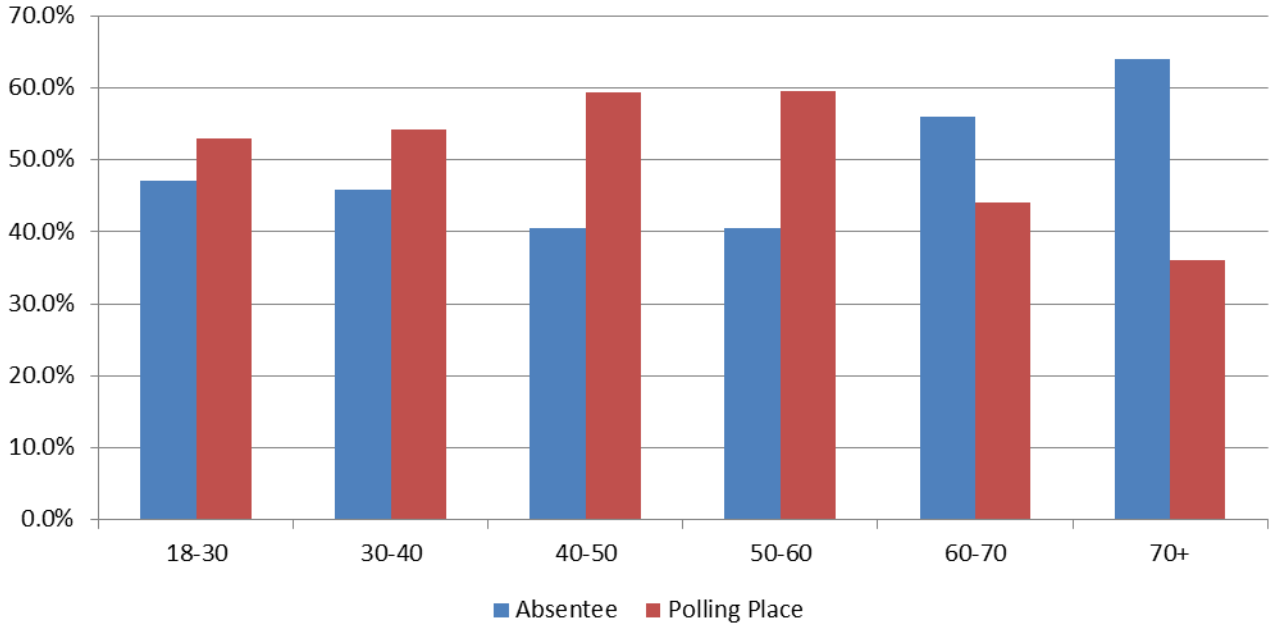


### Registered to Vote by Age and Party Merced County - November 2012

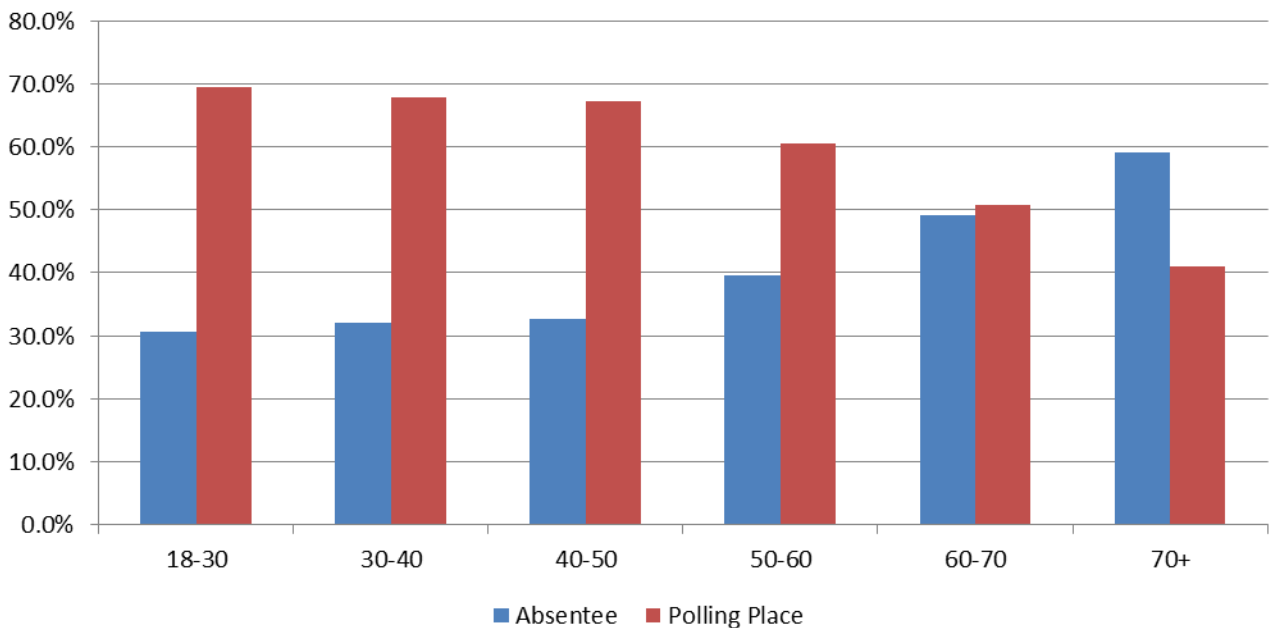




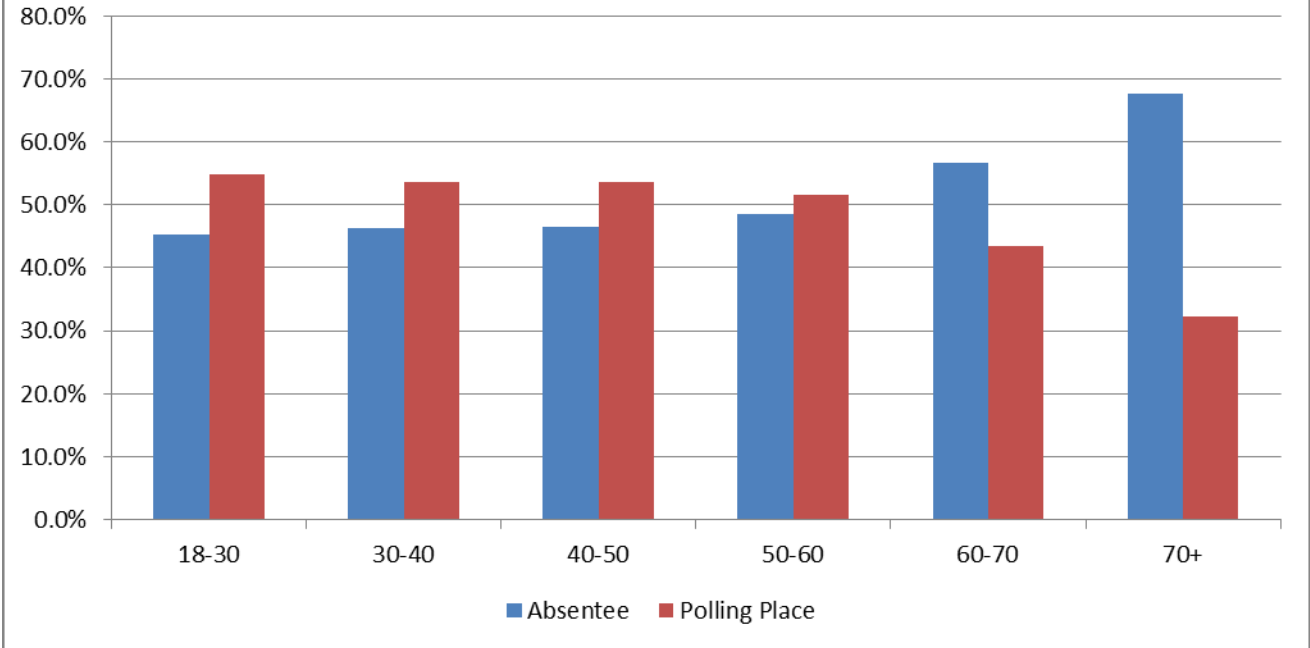
**Voter Turnout  
By Age and Voting Method  
PFSA Merced - November 2008**



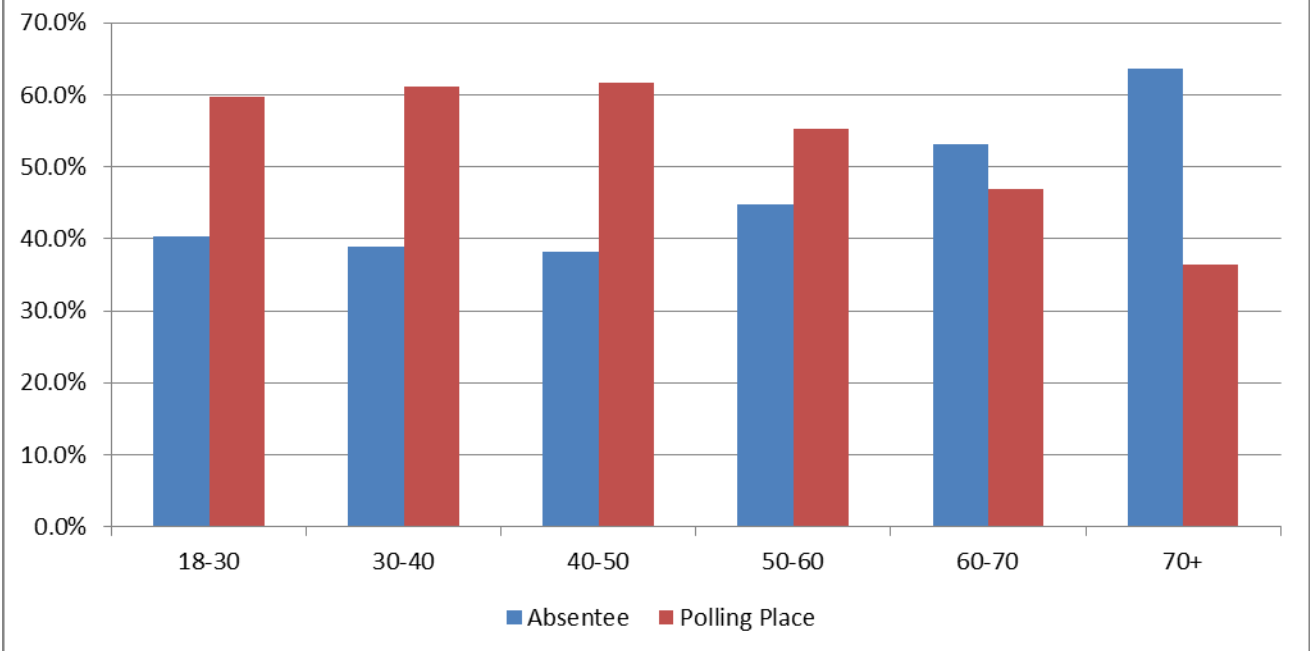
**Voter Turnout  
By Age and Voting Method  
Merced County - November 2008**



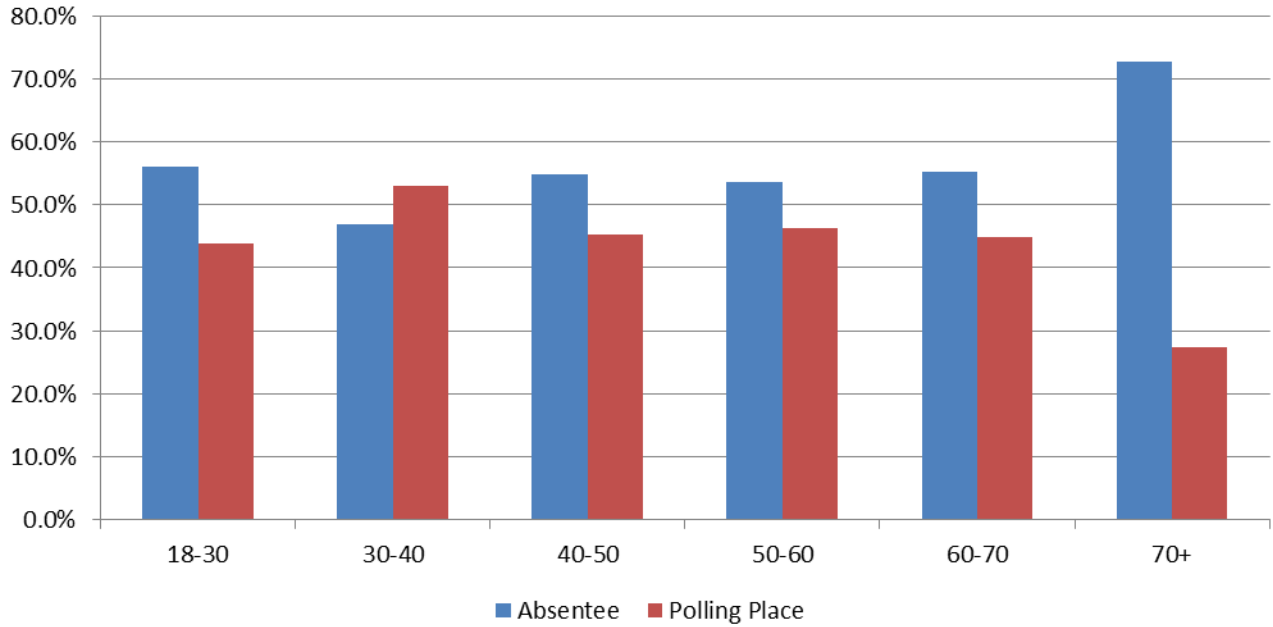
### Voter Turnout By Age and Voting Method PFSA Merced - November 2010



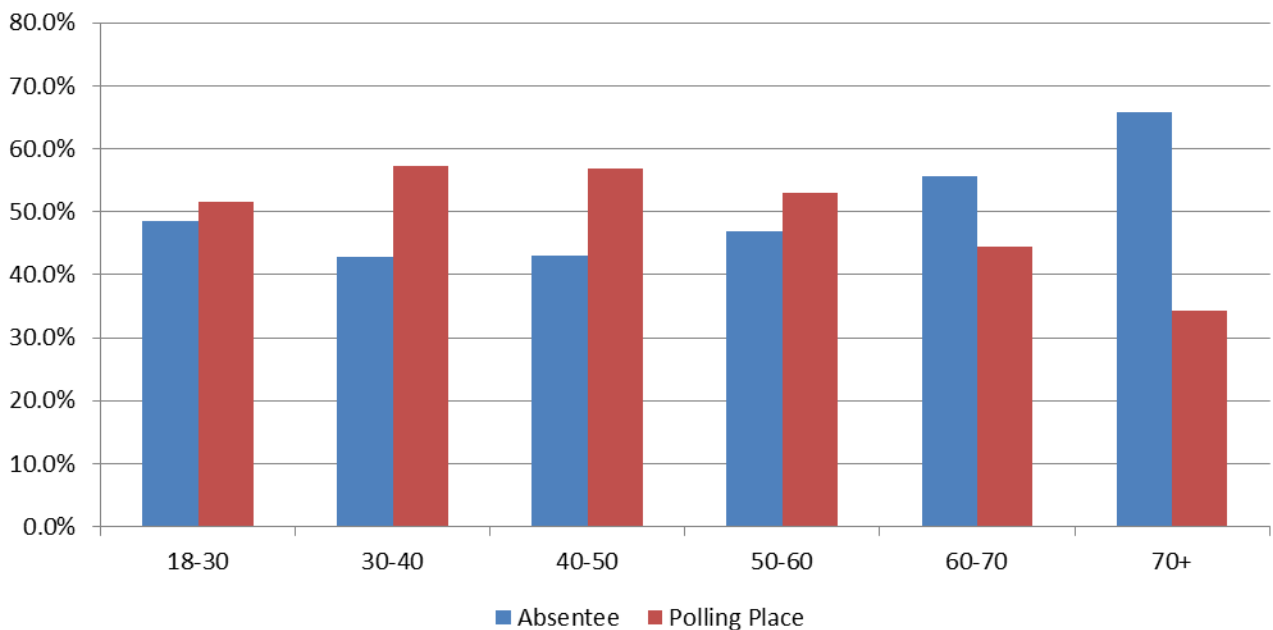
### Voter Turnout By Age and Voting Method Merced County - November 2010



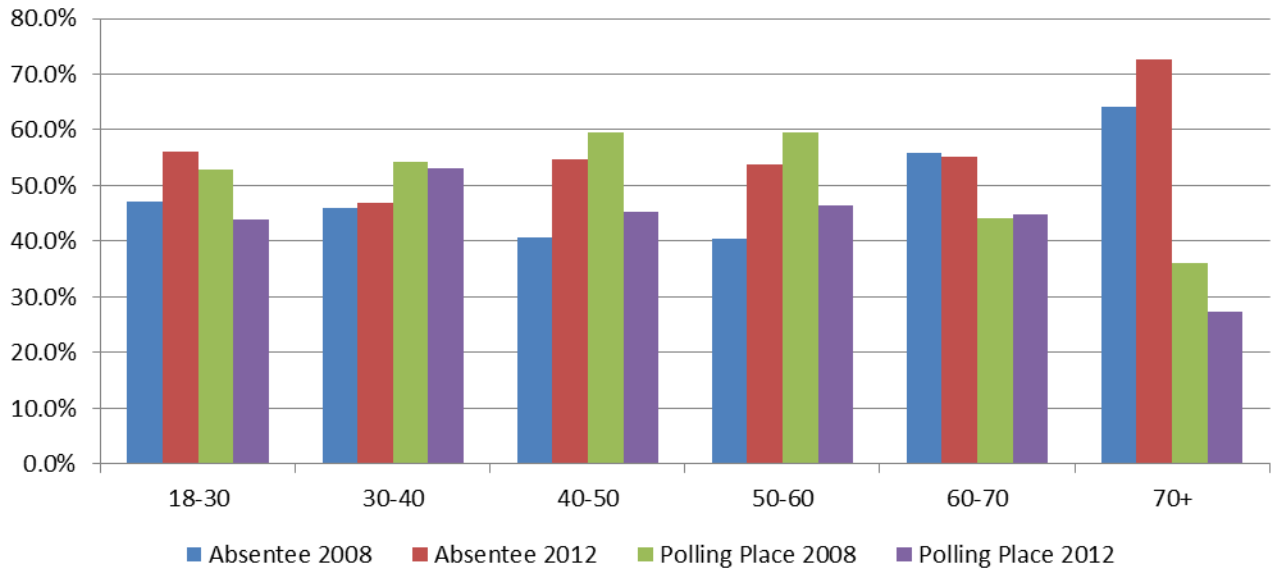
### Voter Turnout By Age and Voting Method PFSA Merced - November 2012



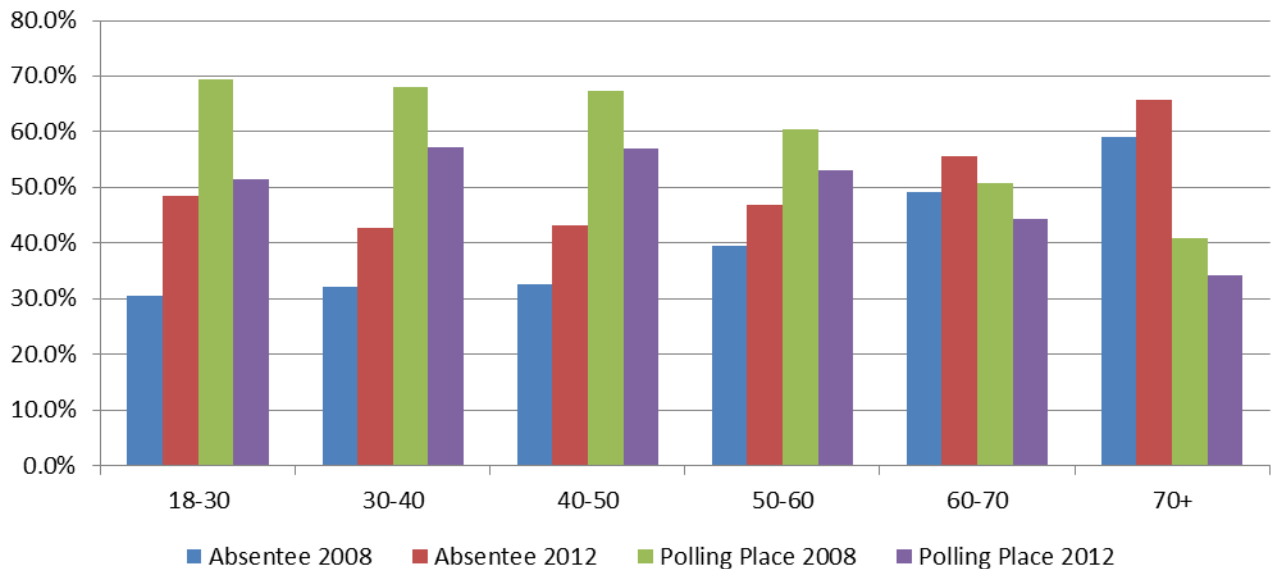
### Voter Turnout By Age and Voting Method Merced County - November 2012



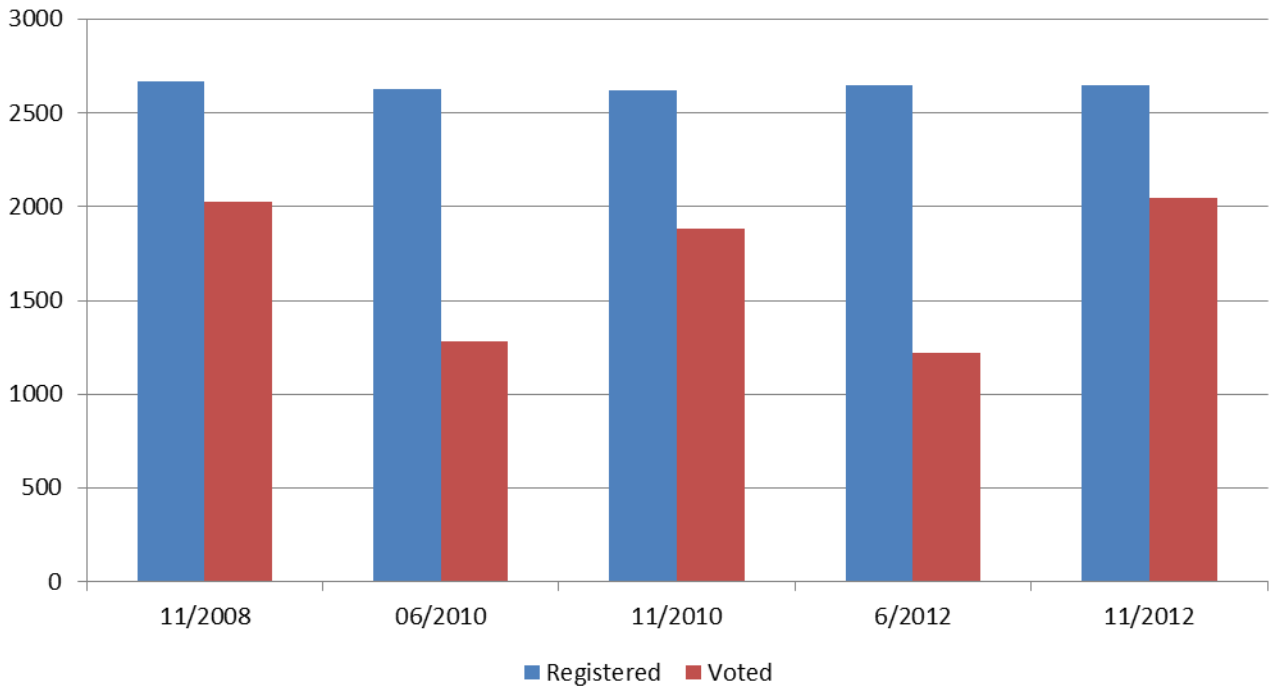
### Voter Turnout By Age and Voting Method PFSA Merced November 2008 vs. November 2012



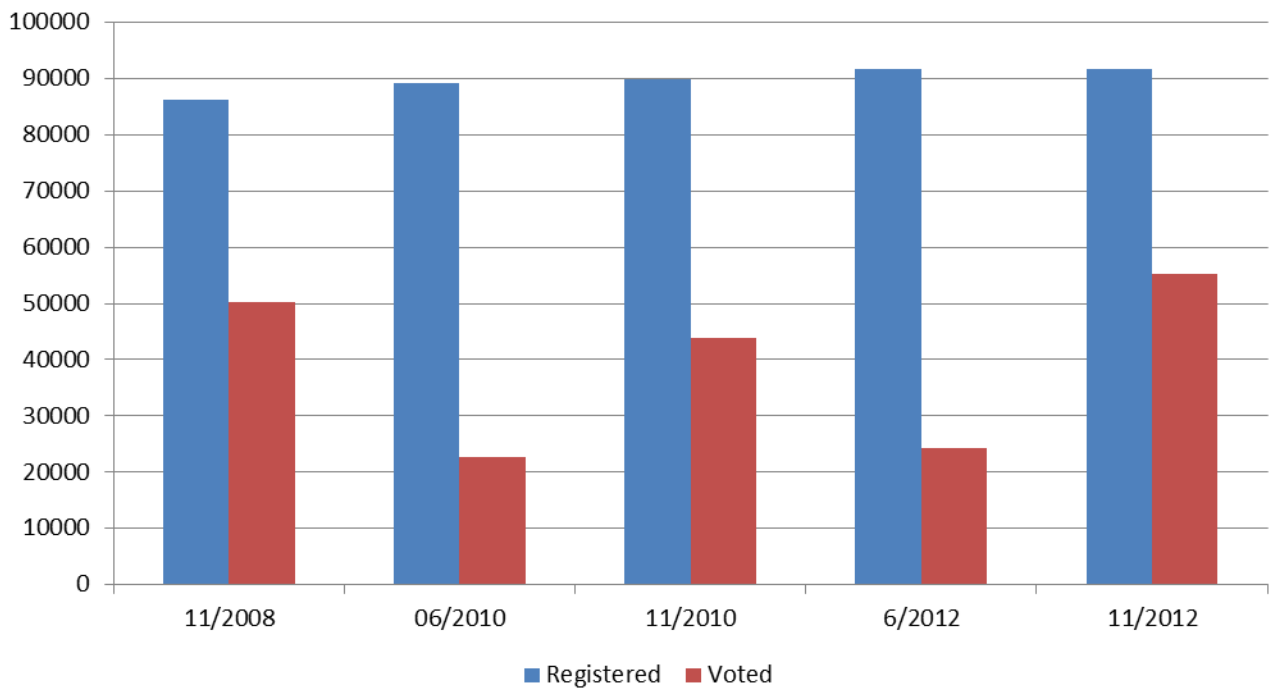
### Voter Turnout By Age and Voting Method Merced County November 2008 vs. November 2012



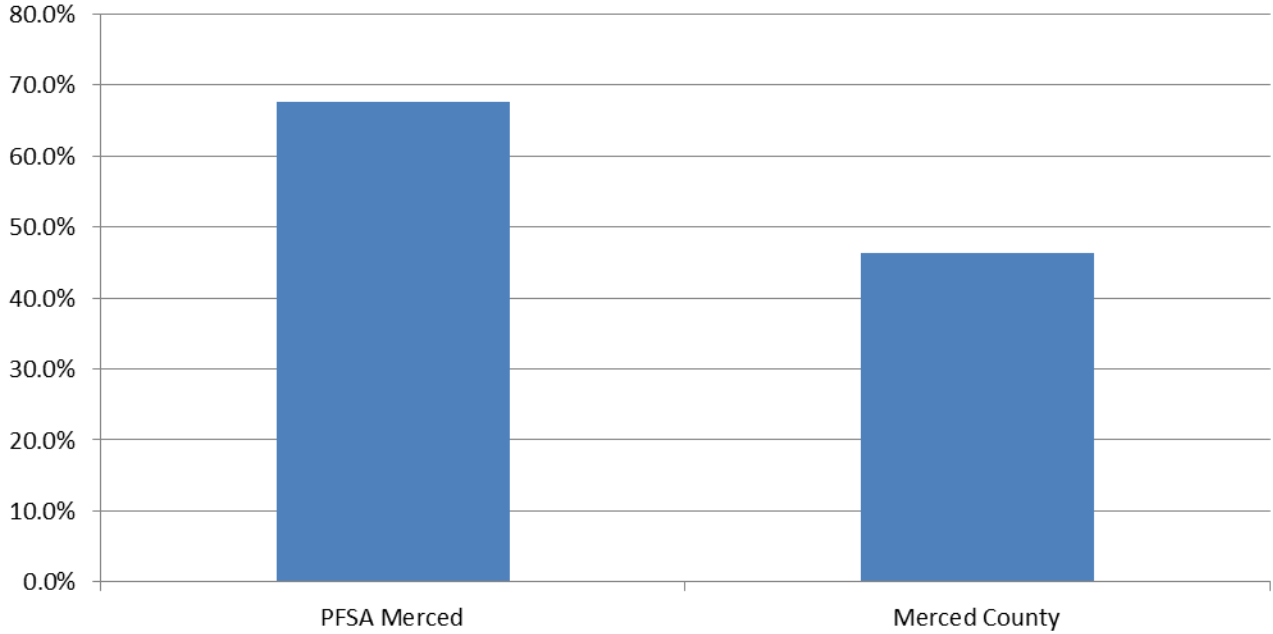
### Registered Voters vs. Actual Voters PFSA Merced



### Registered Voters vs. Actual Voters Merced County



### Voter Turnout Voted in Both 2008 and 2012 Presidential Elections PFSA Merced vs. Merced County



### Voter Turnout Voted in Last 3 Elections PFSA Merced vs. Merced County

